



Applying the PReScan method



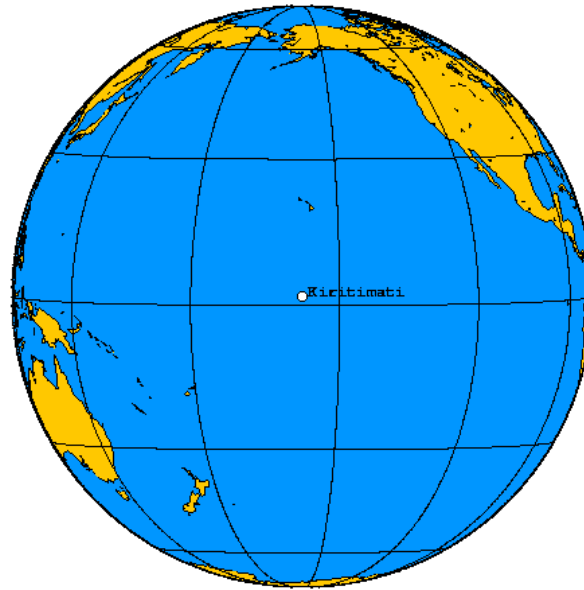
Dedicated to citizens of Kiritimati
and the legacy of their ancestors..

11/12/2017

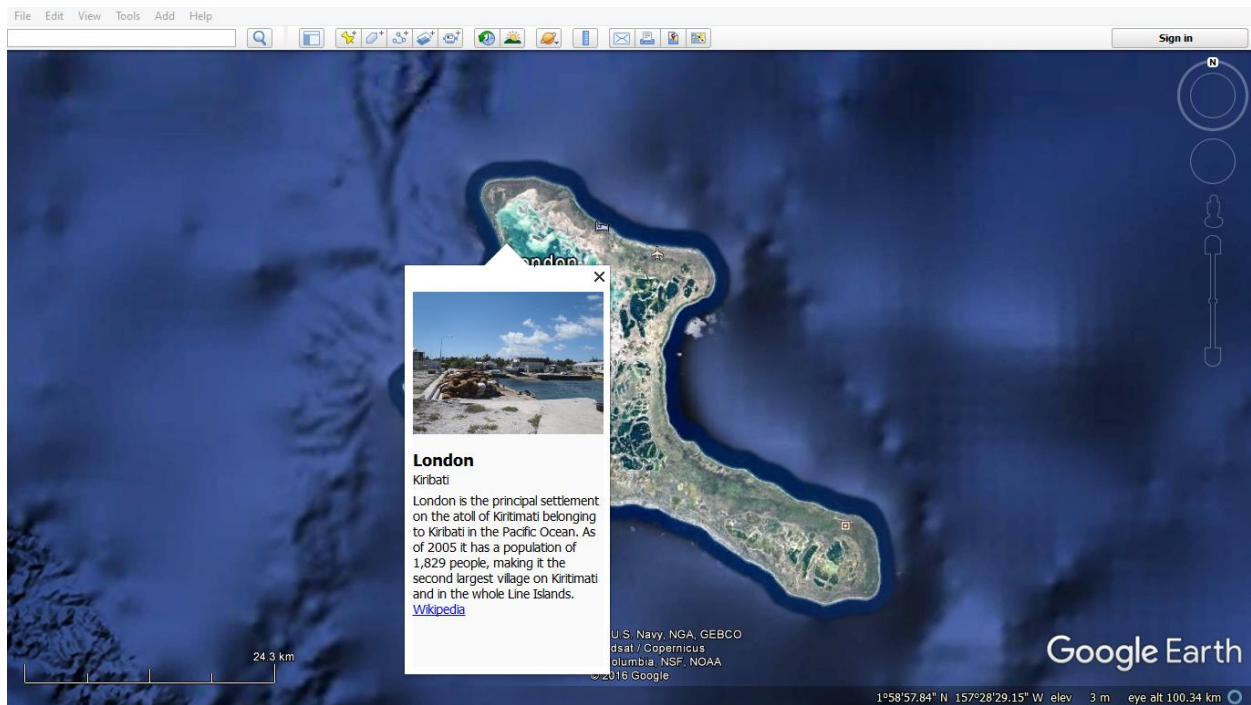
Jorge Caetano Fernandes

©

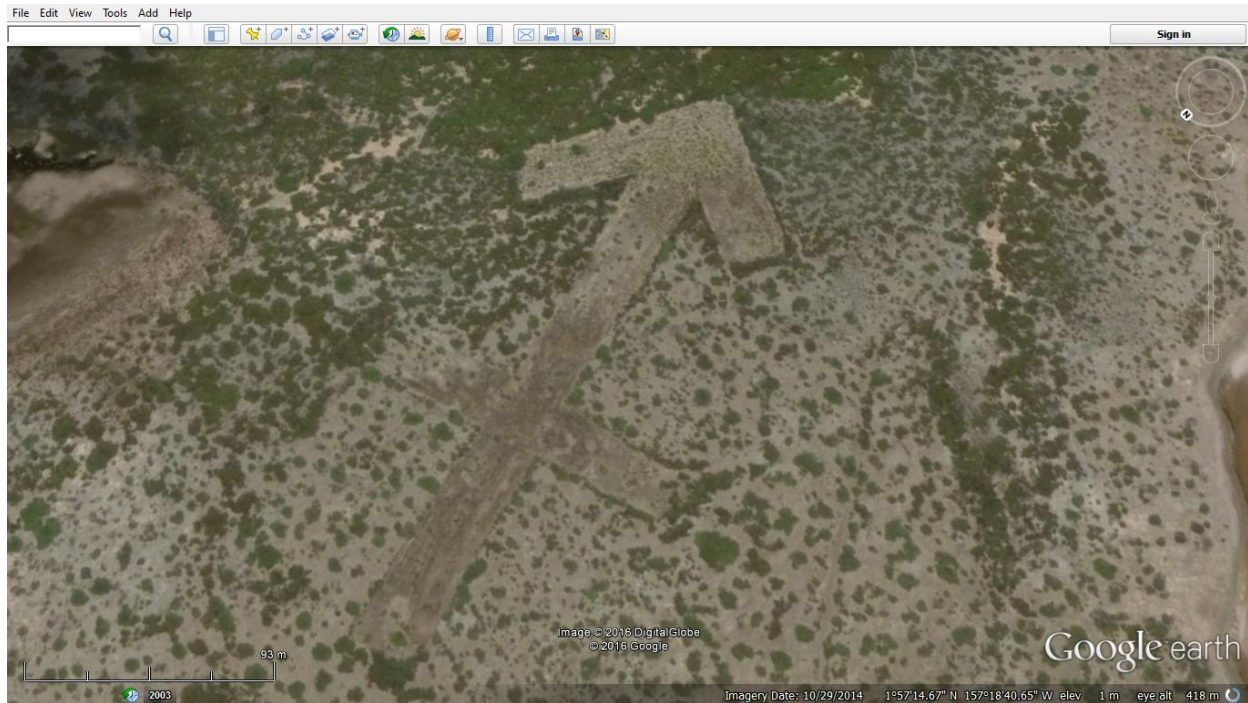
The Arrow and the Target



km
0 1000 2000



Christmas island/Kiritimati



The Sagittarius site

The main *Target* of this chapter is on the island Kiritimati (Christmas Island) of the nation Kiribati in the Pacific Ocean, no too far from Hawaii in global terms. With the tool named *Google Earth* I was exploring the area for remnants of the legendary Lemurian continent and the offspring civilization *Mu'a* on the islands of the Pacific Ocean. I stumbled upon the Sagittarius site with amazement. It is an approximately 300-meter or 320-yard long astrological glyph of the constellation Sagittarius. The main characteristic of its visibility is the absence or difference of vegetation and soil color in relation to its surroundings. The *Site*, at 1 degree-57 minutes-16.64 seconds North and 157 degrees-18 minutes-39.29 seconds West, had an elevation of 1 meter in 2014. The rising of the ocean level has direct consequences for Kiribati, up to the point that at the end of this century the island nation will be uninhabitable because of flooding and the archeological site will be thus inundated. It is to me obvious beyond doubt that the site is not a modern structure and implies a technological sophistication beyond anything historically known to academia. Finding the glyph was an exciting moment and required suspension of disbelief. It wasn't the first surface configuration one can only comprehend from a bird's eye view I and many others have spotted all over the world. The site on Kiritimati is special because it has an interesting message.

The cultural context of the creators of this Artwork – in contemporary terms properly called *Land Art* – must lie within the *Big Picture Drama* of our planet obviously. This is a paradigm academia would label as Science-Fiction-Fantasy-Horror but deserves our

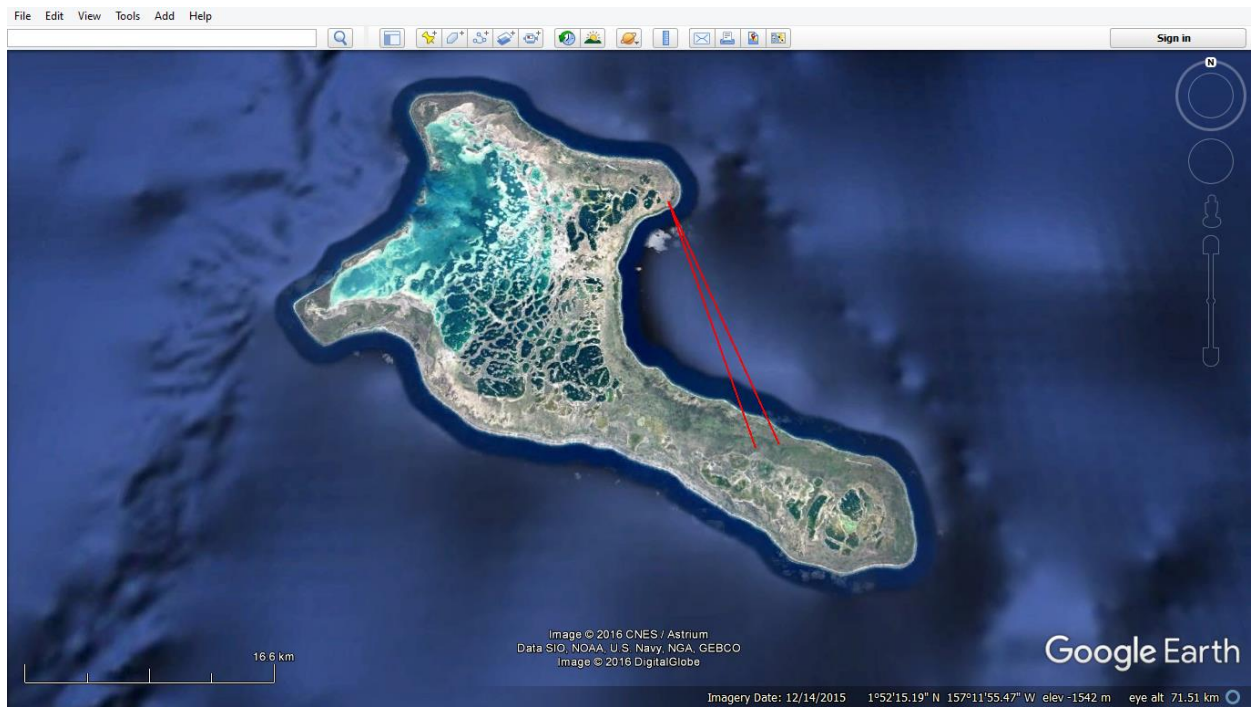
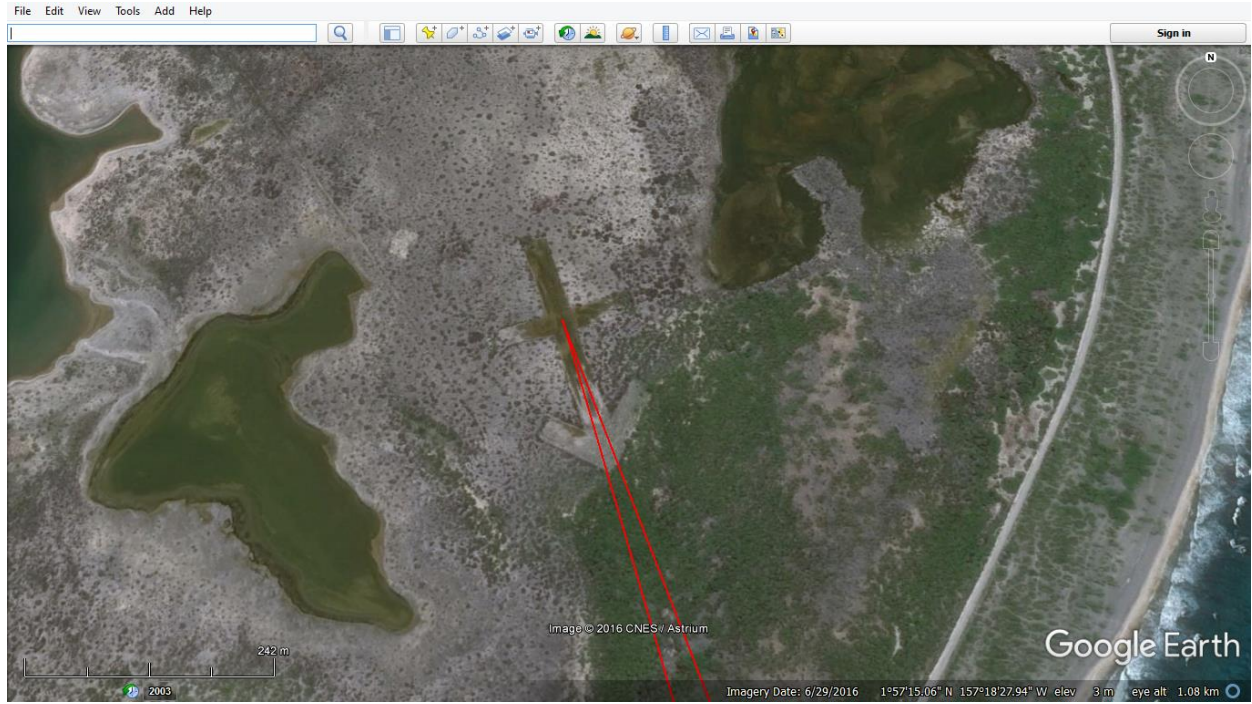
attention and will be given so. It is the only paradigm in my knowledge that can offer an explanation for the observed phenomena. The site offers me an opportunity to implement and test the PReScan method and the Dreamtime Science paradigm.

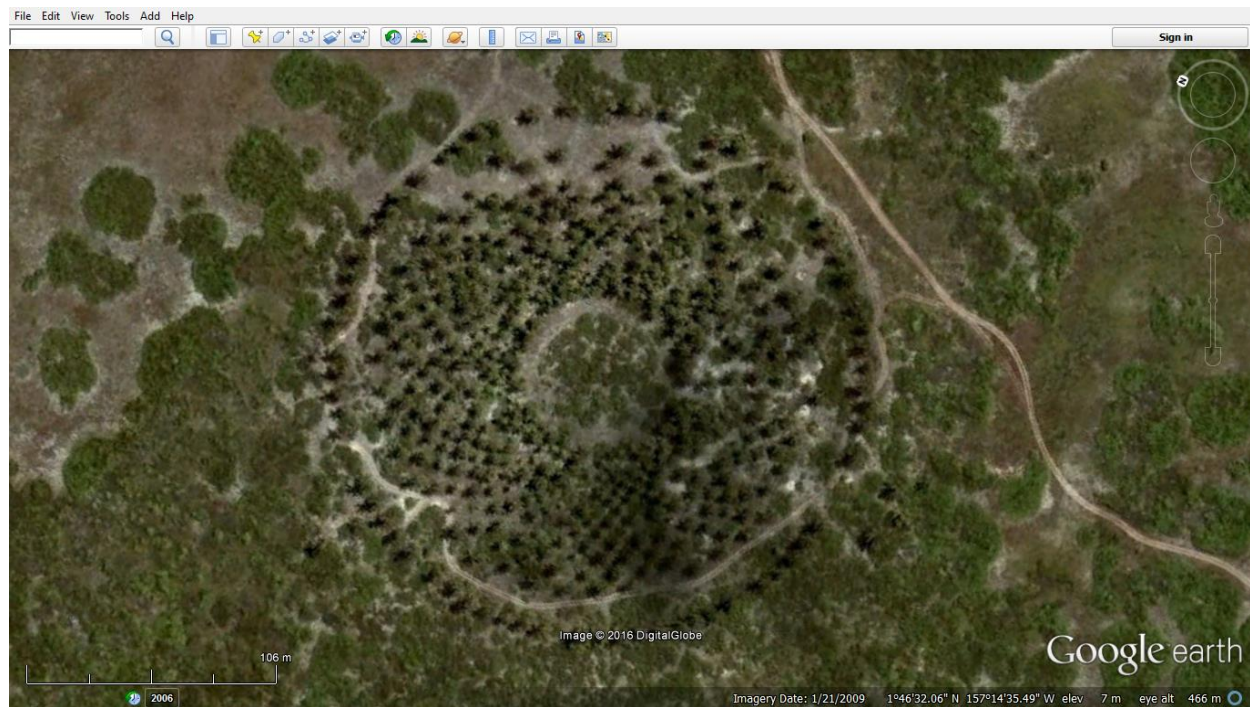
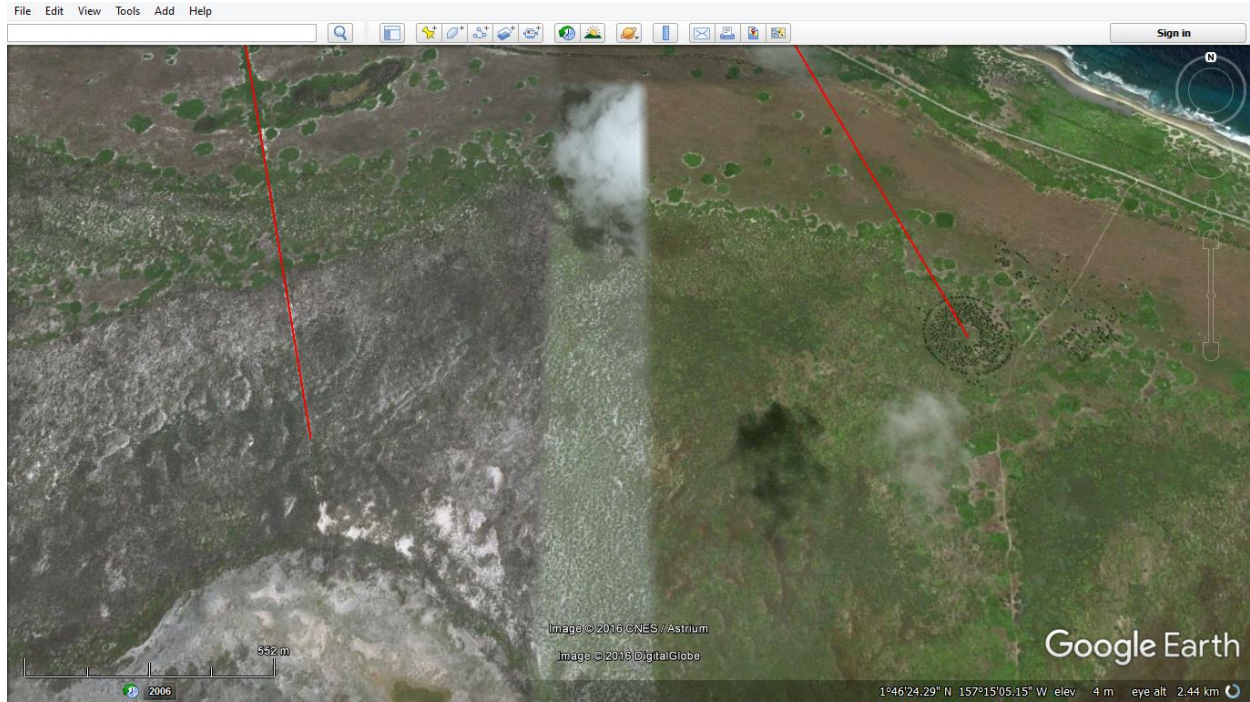
Beyond the usual astrological meaning Sagittarius has an interesting feature generally not recognized by popular astrology. This is the Galactic Center in 27-26 degrees Sagittarius that “surges like a Roman candle of infrared energy” according to Paul O. Hewitt. He claims “that the infrared energy opens the subconscious mind” and “blasts open our Root Chakra”. Stating that “the galactic center is like a satellite dish, (infusing) directly divinely inspired information straight to the potentially receptive gray matter of our brains. If you believe in god, this might be the voice you hear.” Adding that: “research into the most infamous and noteworthy whistleblowers shows that the majority of them have planets and points in the natal charts which connect to the galactic center.” In terms of Archetypal Cosmology he gives various findings I will mention here:

“Another very curious impact of personal planets in aspect to the galactic center is the ‘other worldly’ psychological impact these aspects seem to create. Some clients with aspects to the galactic center speak of not feeling hundred percent human, or not feeling they had human ancestry. The inner dynamic is centered around feeling as if they have come to this planet from some other place. They describe thinking like a galactic ambassador, and feeling as if they are here representing energies, knowledge and civilizations that are extraterrestrial in origin. One client with 26 degrees Sag rising, related nightly dreams in many different alien bodies.”

Furthermore an alignment of the galactic center with the earth increases psychic ability for a 2-hour period according to Nick Fiorenza. This link to dreamtime will be more relevant the more we move on. For now a deeper understanding of the archetype of Sagittarius is proper for our journey. According to James R. Lewis' *The Astrology book; the encyclopedia of heavenly influences* - 2003, the ninth sign of the traditional zodiac is a mutable fire sign, positive, masculine, ruled by the planet Jupiter, and has as key phrase ‘I See’. Its symbol is a winged centaur or archer and its glyph is an arrow, denoting the arrow in the bow that the centaur is holding.

What happens if we follow the direction the arrow is pointing at? We must cross a bit of water and land on the shore at the other side of the island. There we find a place that is obviously regularly visited by the local residents as evidenced by the road leading into it.





The Mandala site

The line on the left lies over a *geo-line* and lies precisely on the direction the glyph is pointing at. The right line hits the center of a conglomeration of trees. This is a correlation

to the constellation because the archer points at the galactic center. The general meaning for a Sagittarius person is that he or she:

“..is shooting for a goal. With eyes on the distant horizon, Sagittarius seeks a lofty goal or grand vision. Sagittarians do not get bogged down with details; they understand the overall situation and they travel, negotiate, socialize, and explore on a large scale that provides the information, contacts, and resources to pursue large scale projects.” R. Lewis

If I follow the logic of the glyph and symbolism I deduce that not only is the arrow pointing at the circle of trees but that there is a puzzle to be solved. The constellation in the sky points at the galactic center that is potentially a source of inspiration and spatial center of our galaxy. Metaphorically the arrow of the archer points at the center of the galaxy which is thus a correlation to the circle of trees. I have named it the ‘Mandala site’ because I recognized the pattern of the trees from an image of a toroid mandala. The site consists of a circle of what I think are palm trees in a very specific formation known as a two-dimensional representation of a torus as can be seen on the images. This can be thought of as a *Hypersphere* which is a way to signify a dimensional *mise-en-abyme* effect that can be correlated to the mathematical characteristics of a *fractal*. It is an image of a multidimensional sphere, a globe within a globe within a globe. This correlates to the galaxy being many heliospheres, circling around a center which is itself a nexus point of its own hypersphere. Indeed the arrow is itself and points at an intellectual-artistic creation of ambitious proportions characteristic to a Sagittarius personality.

An interesting quote from Nick Fiorenza:

“Galactic Center, the heart of our galaxy, is the zero point space-time reference for our evolutionary system – the center of the soul. Galactic Center embodies the essence of (the) soul’s greater incarnational purpose, beyond any given lifetime. The term Galaxy is from *galacto*, se. milk-meaning that which is mothering and nourishing, hence being our ‘Milky Way’. Our galaxy, specifically (the) Galactic Center, and the galactic plane spinning outward from (the) Galactic Center, provides the greater evolutionary context or nourishing substance for our souls. Galactic Center lies just south of the Gate of God (Golden Gate, JCF), at about 2 degrees sidereal Sagittarius. The core of our galaxy is the core from which springs the spiraling arms upon which nests all the stars and life in our galaxy. Alignments with our Galactic Center invite us to enter the pure

essence of galactic awareness; to allow a re-assemblage of our consciousness and to subsequently re-emerge with a new wisdom and greater truth, which we must then apply with conscious and responsible deliberation in our lives. Typically this is an all or nothing deal, no in-betweens. Here we must strip ourselves of false facades and false gods, and relinquish lesser vibrational modes of being and ways of participating in the manifest world and pull forth the totality of our soul essence and express this greater maturity into a higher-order expression throughout our incarnational sojourns. (The) Galactic core offers opportunity for a re-instatement if the soul awareness.”

What follows is a summary of various PReScan spreads and the analysis thereof supplemented by quotes that clarify the metaphysical dynamics of these sites. I made use of various hubs of information, categories that allow for structuring of results and extraction of meaning. The best way to relay this is in summary form because the results are in Archetypal-language – 5th Ray - and must thus be translated in the current textual three-dimensional form.

As is consensual in some card-spreads I make use of two or three *indicator* cards that frame the whole spread. In the first spread the three indicators were framed by three concepts. The first indicator (i-1) was the *Human Civilization Index*, the second (i-2) *Plot Dynamics/Elements*, the third (i-3) *Art*. These three indicators form thus the paradigmatic field of the spread. I am thus scanning for the degree of ‘human civilization’, the nature of the ‘object(s)’ or sites and possible events or scenarios. The outcomes for the second spread were for i-1, i-2, and i-3; the 15th I-Tjing card as is organized in the system of King Wen, the 720-degree card, and the 540-degree card. I-1’s title is *Humility, Mountain below Earth above*. According to *The Buddhist I Ching* - translated by Thomas Clearly, Shamballa Publications 1994 – this archetype in political terms means not being self-satisfied at good fortune when the earth is at peace and has become a paradise. This and the esoteric aspect of the card will become relevant in relation to galactic history. I-2 stands for the Hexagon which consists of 6x120-degrees, the amount of degrees in a Tetrahedron. The 720-degree marker will also be relevant the more we move on. I-3 stands for the Pentagon, 5x108-Degrees, forming 540-degrees. This can stand for two frameworks either the esoteric aspect of the 108-degree angle or one of my own archetypes. In the second, third, and fourth spreads i-1 gained an interesting archetype. The 14th morphogenetic chakra, the first universal energy point of our multi-dimensional anatomy. I-3 gained the Queen of Wands archetype linking Earth (the Queen) with the Fire and Wood elements. The result for the *Art* category of i-3 was ‘unity’. This indicates that the creators of the sites were fully aware

of all aspects of their creation and combined science, spirituality, architecture, craftsmanship, art, and social dynamics into one gestalt expression. Further scanning presents the 'concrete object(s) – either material or immaterial -' as compelling and powerful 'charged object(s)'.

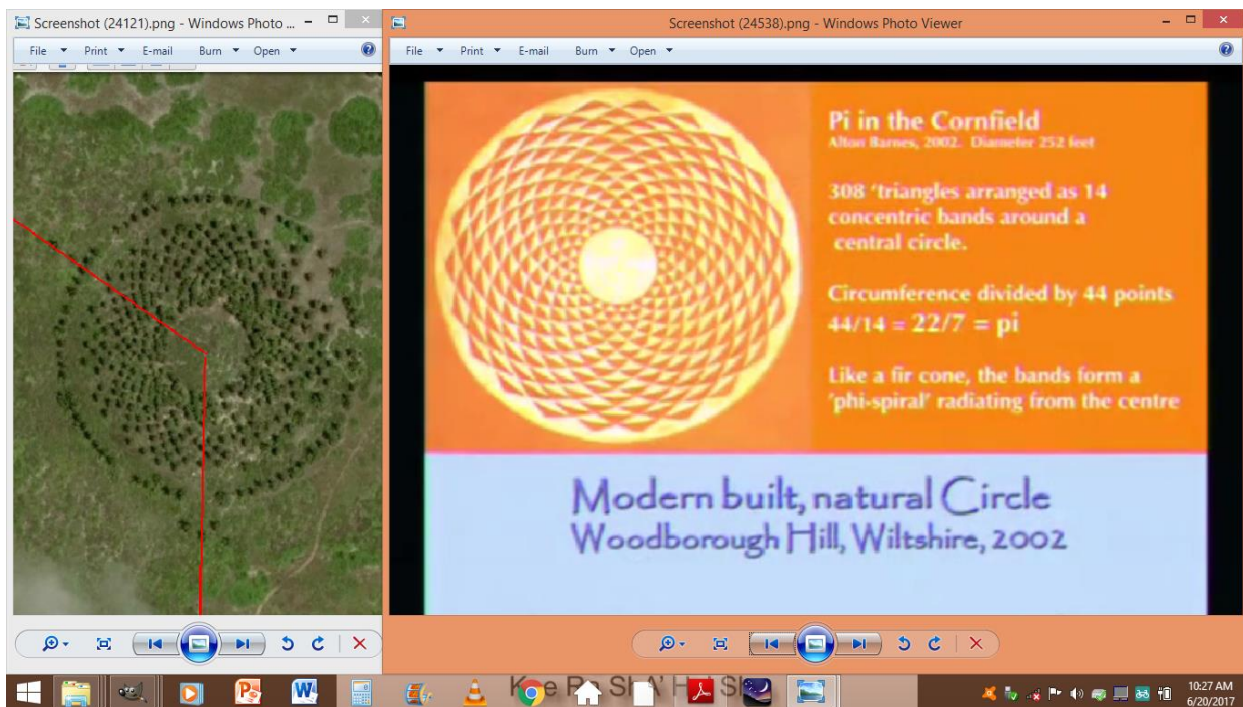


My interpretation of the sites synchronizes with a specific segment of Galactic History #17 by Lance White interviewing the Galactic Historian named Andrew Bartzis, available on YouTube. Consciousness of the primal sound-light fields chose the vessels called Trees to incarnate on Earth helped by local ambassadors. By growing them in a specific pattern the locals created a geo-telluric-doradic dome of consciousness that functions as a dreamtime-reality. The combination of the 720- and 540- degree cards imply that the object(s) are an entry point for the creator of a cultural realm with an interdimensional nature. I-1 also had the I-Tjing card *Thunder over Lake, 'Marrying a young girl'*, that indicates an important duty between Heaven and Earth. In this context the word heaven refers to the dreamtime of a culture of Avatars in the form of humans and trees (Bartzis, Galactic History #17). This correlates to my use of the 720- and 540- degree cards which imply pre-earth existences and soul-contracts in relation to Earth as well as interdimensional dreamtime geo-grid dynamics .

Scanning results are that the Sagittarius site is a galactic nexus point linked to solar energies. The Mandala site functions as a bridge point where one has to enter an altered state to interact with the dreamtime field. The geomantic configuration of the trees amplifies the basic geo-telluric and geo-doradic dynamic between a human and environment. The human nervous system produces a resonant alternating magnetic field, which is capable of extracting ions from the atmosphere when there is a vibrational match to the same ionic frequency. I focus on this because scanning implies a relationship

between the 14th chakra of a *Dreamer*/Shamen/Priest/Remote-Viewer and the 2nd-dimensional fields, which are the electrons according to Keylonta. This suggests an interactive electromagnetic dynamic between the sites and the human nervous system. The iron in our blood, the ultra-weak electromagnetic signals we use to coordinate our bodies in times and space, our central nervous system all function as conductors.

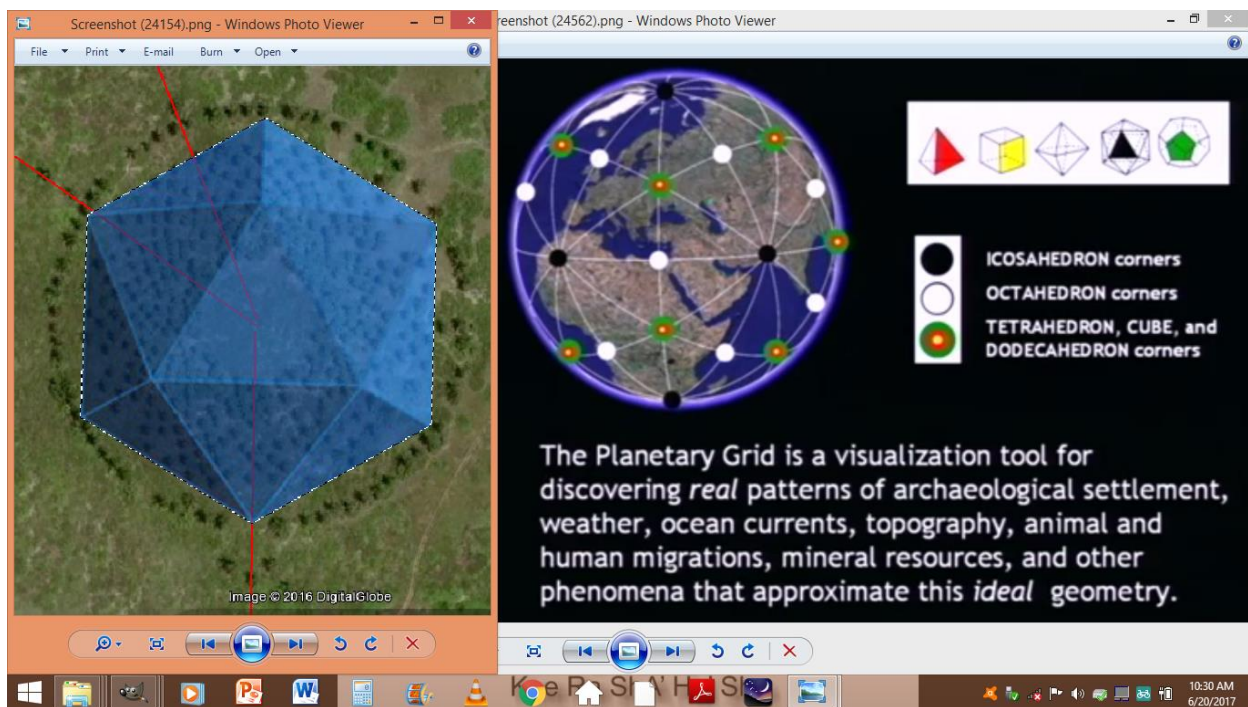
“We as individual beings who are made up of sixty-seven trillion plus cells, who use water, and PH as electrical conductivity, and we use chemical stimulus electrical conductivity meaning we do have poles, positives and negatives, within us. Our consciousness can tune in to the Schumann Resonance or the ‘heartbeat of the Earth’. (Which is) the way in which Earth can commune or communicate to those on its surface through this background (of) electromagnetic frequency. And it is your consciousness within your body. The body becomes an instrument for understanding the Schumann Resonance.” Lisa Renee



The purpose of a site like this is to work with the Telluric currents of the planet. They are extremely low energy frequency and travel over large areas at or near surface Earth. The general flow direction is towards the Sun. They move between the sunlit and shadowed sides of the Earth, toward the equator. So called sacred spaces are known to be hotspots of these flows and also gravitational anomalies tend to occur in relation to them. The Earth itself acts as a conductor and a battery for these electromagnetic currents. The Solar Wind intensifies Earth's geomagnetic field, the intensity lowers at night, and this wind interacts

with a secondary current labeled Telluric, erroneously sometimes called Ley Lines. Plants, soil, water, ions in the atmosphere, ions in the soil and in the water, plus the human body, all interact with these flows forming a field of interactions. The sacred spaces form a conductivity discontinuity network over the world that are charged and discharged according to the rise and fall of the Sun.

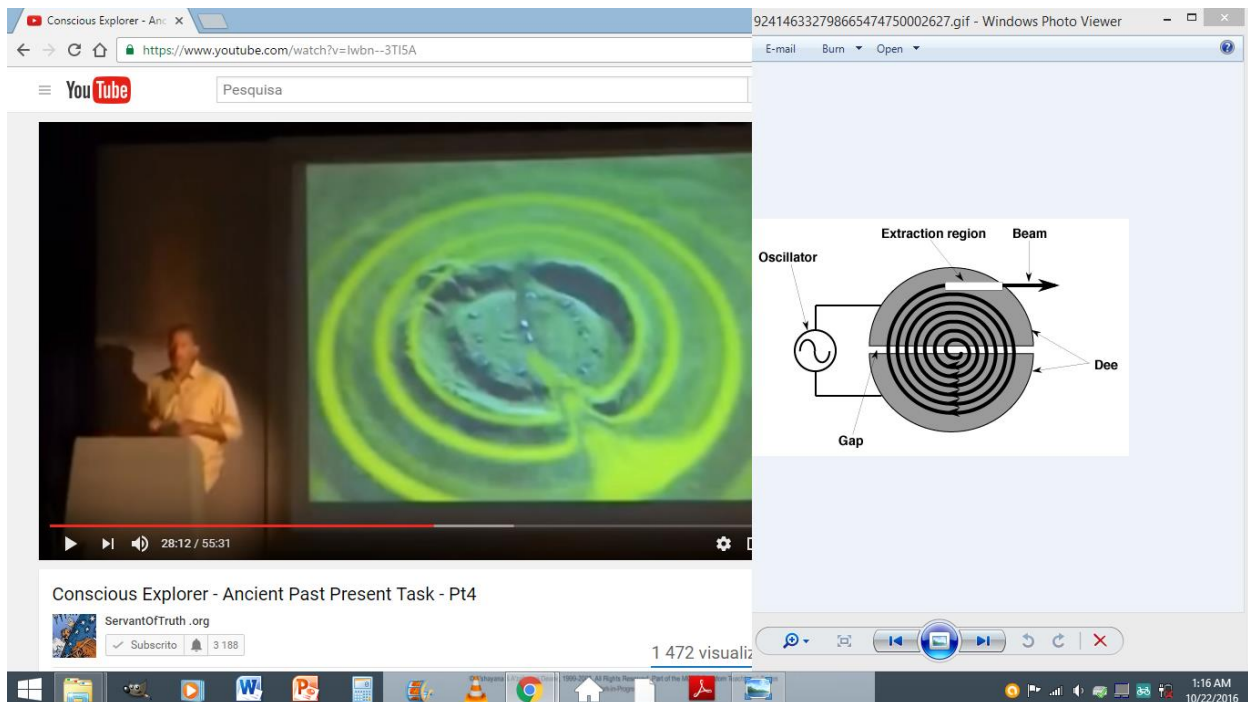
“Everything that is space has a magnetic pulse around it, and our Earth is creating a magnetic pulse. That pulse is omni-directional, pulsing in and out. That is the Schumann Resonance. It goes to the edge of our stratosphere and then that pulse comes back in, constantly in a breathing process, a toroidal breathing process. That is essentially the Schumann Resonance, the background electromagnetic frequency of how particles follow north pole to south pole and what flow the particles go in.” Andrew Bartzis, 2017.



To further contextualize with a quote from Lisa Renee:

“Geomantic structures are based on comprehending the geographical energy configuration, thus designing the building of that architecture on the site, to amplify the configuration of that specific energy to expand consciousness. Geomantic structures can be both physical and etheric structures on earth, and can be seen in one form or both. Our

body may act as an anchor for the frequency that is required to rebuild and repair the etheric structure so that it can be energetically re-circuited. Geomantic structures hold specific kinds of intelligent energy, as well as timelines, and interaction points that access virtual reality in other dimensions. Further, they hold Archetypes, symbolism, mythological and creation codes. All these are factors in spiritual activation, initiation and elevating consciousness for humans and the planetary body.



A screenshot montage in which the geo-telluric dynamics of an earth-circle is juxtaposed in relation to a cyclotron. The base systemic operation is similar in terms of circular/spherical form and directional electromagnetic expulsion. A cyclotron is a particle accelerator. The half-circular pieces, called 'dees', have alternating electric potentials applied to them such that a positive charged particle always sees a negatively charged dee ahead when it emerges from under the previous dee, which is now positively charged.
T.A. Eleyan

The Galactic Historian:

“When light enters the *Sacred Geometry* three-dimensional light contract whether it’s created by the mental structure of a being psychically projecting photons through their third eye, or a piece of technology that isn’t sentient, that creates the same

effect. ‘Kay, it’s the same thing. So that is reality creation right there, we can create realities in many, many different ways. The Ley Lines, when we as species disconnected from the original Ley Lines, about 900,000 years ago, the sacred geometry infrastructure what it was doing was leading us out of the areas of the Earth, so that we come back into the cities that were based in sacred geometry, so we would begin dreaming there instead of our natural Dreamworld.”

The *Masters Templar Mechanics Level-1* by Ashayana Deane engages in the interactive aspect of this kind of site.

“Like Vortices, some Etheric and Physical Crop circles can reveal huge amounts of technical and historical data, as they hold electromagnetic memory programs indefinitely. (They are) FUN to play with via projecting your consciousness into them to see what images, words, feelings or impressions are revealed.”

Scanning results directly state that the Mandala site is a *Dreamcatcher City*. I have based this concept on the so called ‘Dream Cities’ by Andrew Bartzis in combination with a *Dreamcatcher*. The latter is from what I understand a traditional North American cultural object that has a specific geometric and material configuration that interacts with the user’s Oneiric mind. A dream-city is a place that is created by ancestors in a specific locus with the function of being a link to a dream-realm in relation to (a) specific ethnic group(s).

Another quote from the Galactic Historian that clarifies the social-cultural context:

“You’ll have to project yourself there in a dream sense first, and then learn the rules, and when you project there you’ll need something like a temporary visitor or immigration status via your Dreamworld. The dreamtime cities will be very well protected and they’ll have specific rules on what entities can come in here and what the experience is about. They don’t want you coming in and changing their reality.”

Scanning results imply that one will find mentors and peers when projecting one’s Light Body through the entrance into the dreamtime-reality of the Mandala site. The motivation behind the building of the site is a conflict in relation to the ability to govern one’s own existence without being entangled in a system of oppression, domination and control. The connection between the Sagittarius site and the Mandala site is mediated via the vessel of the Lemurian geo-grid network called *The Four Faces of Man*. This is a scanning result and

follows logic according to the location of the island and the history of that specific grid. It implies that the bigger picture is the Lemurian Holocaust and the Kauai massacres in the period of 28,000 BC – 20,000 BC. In modern times the island has been subjected to nuclear weapons testing without the consent of the public. This is general history and does not seem to be relevant in the context of my scanning but is relevant in the context of geo-grid dynamics.

The Galactic Historian in conversation with Lance White:

“When they started testing nuclear explosions, it wasn’t a test. Everywhere there was a nuclear explosion it was done on purpose to make interdimensional rifts or to kill *Hollow Earth* based or entities or Earth based entities that live in the astral realms. All the orbital explosions where meant to destroy a whole of incoming migration patterns, completely eliminate them from the astral experience. Many of them can no longer function as energy beings and need to be brought to Venus to triage centers. Where literally soul triage centers can put the pieces parts back together one step at the time.

L. White: Isn’t there also a factor so that if enough nuclear explosions went off that the earth would be unable to continue functioning?

G. Historian: Correct. Also, if they had done that they would have access to Hollow Earth, the Agartha Network.

There is an actual website that shows each individual explosion from the 1940’s-on. And you’ll see America has like 5800, (compared to) to France’s 11 and to Russia’s 700. And it just shows you, all over the world, explosion-explosion. It tells you the altitude or the depth in the Earth. I advise everyone to go and use a search engine to find that little graph of everyone going off. When you physically see that for yourself you realize that it’s lined up to exactly the grids of Earth. Look at the pyramid-grid, the Giza-grid, it all interacts with that energy. All of those explosions are purposely in areas to inter-effect the grids of Earth into lower consciousness or to destroy consciousness.”

The ancestors of these sites seem to be the ‘children of the star; a tribe of wizards’. One must note that the term *Wizard* may refer to anyone that actively creates objects and/or

buildings or practices any craft. In relation to contemporary times the sites are a self-hypnotic regression device that allows for dreamtime communication and travel. Especially the method referred to as 'future life progression', a self-hypnosis technique by Bruce Goldberg, is highlighted by the scanning. This technique is also a way to connect to the Ackashic Records according to Doctor Goldberg. This correlates to the Four Faces of Man being a link to one's multidimensional anatomy and Ackashic Records as stated by Lisa Renee's and Ashayana Deane's work. Palm trees are plenty on Kiribati and the Mandala seems to be made of the same trees as the others on the island. My estimate is thus that the Mandala site is created in the twentieth century or sustained throughout a period of time meaning it could be older than that. Scanning results state that it has to do with a period indicated by counting back twenty cycles of the dwarf-planet Quaoar; approximately the year 3674 BC. The Sagittarius site looks like it is a ruin, for the boundaries are vague and diffuse by the vegetation. My estimate is that the arrow is created millennia ago and the torus is contemporary since it must be sustained like any garden or park.

Quaoar, based on the information by Nick Fiorenza - a trans-Neptunian object - was the name given to the 'creation force' by the Tongva of the Los Angeles Basin in southern California. Their legend describes Quaoar as a figure who came down from heaven and reduced the chaos to order, and laid the world on the back of seven giants, to which he proceeded to create the animals and humans. Fiorenza puts forward an interesting angle:

"Considering its name, Quaoar may have relation to what are equated with native people's perceptual abilities, those who live attuned to earth and nature's cycles (i.e., with natural world, animal kingdom, and shaman type perceptions)."

Mark Acuna, Tongva scholar, dancer and tribal elder:

"Quaoar' the great force of creation sings and dances the high ones (deities) into existence. While Quaoar has no form or gender he is usually referred to with the male pronoun. He dances and sings first 'Weywot' who becomes Sky Father; they sing and dance 'Chehooit' Earth Mother into existence. The trio sing 'Tमित' Grandfather Sun to life. As each divine one joins the singing and dancing, the sing becomes more complex and the dance more complicated. In turn 'Moar', Grandmother moon (a very complex deity), 'Pमित' the Goddess of the sea, 'Manit', the Lord of dreams and visions, 'Manisar' the bringer of food and harvests, 'Tukupar Itar' Sky Coyote (who is also our major hero), 'Tolmalok', the Goddess of Shishongna (the underworld) join in the singing, dancing and creating. And

finally the great seven giants who hold up the worlds are created. The High Ones in turn are aided by 'Eagle, Duck, Bear and Frog' in a grand earth diving story. Frog brings up soil out of the deep dark sea, and the four animals dance it flat and wide. The 'Gods and Goddesses' the furnish the world Tovangar with hills, mountains, trees, rivers, etc. 'Tobohar' (first man) and 'Pahavit" (first woman) are also part of this 'creation song and dance cycle'."

I scanned Quaoar with the question: 'who or what is Quaoar'? The answer was organized in a five card spread. It seems like it has to do with the Four faces of Man grid and that the mythology is built around that. On the physical position of this spread the outcome is the I-Tjing card *Water over Earth; Accord*.

"In Buddhist terms, when you have skillfully applied corrective measures and have become enlightened, those in other states of mind regard you as a reliable guide. This is called accord. In terms of the contemplating mind, once you know which corrective method will work and which will not, it is necessary to adjust and harmonize the elements of the path to enlightenment. The coordination of those elements is called accord."



This card goes well with the myth of Quaoar being one of creating order in chaos and being a guiding deity in Dreamtime. The Four Faces of Man is created to connect humans to their interdimensional soul families and stabilize the perversions done to the Earth's grid. Quaoar was probably a *Galactic Roaming Citizen* or *Civilization* that came to connect a locus to the Four Faces of Man Lemurian Pylon Implant Network and thus stabilize the local climate, grid, and higher-dimensional realms. Apparently such a being or groups have/has done something similar on Kiritimati.

In 'Voyagers 2: The Secrets of Amenti' (p.372) by Ashayana Deane there is a passage that connects well to the theme of Quaoar:

“In 22,500 BC, just before the failed Stellar Activation Cycle of 22,326 BC, the Azurite-Eieyani Universal Stargate Security Team of the Inner Earth Time Cycle visited the remaining Lumerian Islands (Muaravhi) and the Mu'a Maji Human races residing there. With the assistance of the Mu'a, the Azurite-Eieyani 'Indigo Children' implanted another advanced Pylon Implant Network System, in an attempt to stabilize Earth's Templar and 'resurrect' the Great White Lion and the Golden Eagle Atlantian Pylon Implant Networks in preparation for the 22,326 BC Stellar Activation Cycle.”

An example of a researcher named Freddy Silva illustrates this theme in the wider region namely the Pacific Ocean, South and North America and East Asia. Just like the survivors of the Atlantian Cataclysm the survivors of Mu'a spread around the area and started new settlements where they could.

“The long ear ancestors were supposedly a group of magician builder gods called, and you have to do this with a sort of art-movement- the *Ma'ori-Ko-Hau-Rongorongo*.. (it) literally means 'the master of special knowledge'. And it is claimed by the Easter-Islanders that these were the people that were responsible for raising these beautiful Moai statues. And according to the oral tradition of Easter Island they supposedly moved these enormous statues with something called 'Mana'. Which is a kind of psychic force where matter yields to the focused intent of a master of the subtle arts. And legends state, and again I quote, by words of their mouths the statues were commanded to walk through the air. And you may think this is quite unusual. The same story pops up in the Andes because here we have a group of megalithic monument builders called

the *Huari*. And they were described as a race of tall, white skinned giants, sometimes they would have red hair. The most celebrated of whom was a big guy called *Viracocha*. He was described as a builder god who together with seven shining ones goes about building temple complexes up and down the Andes, literally overnight, using vocal commands that made the stones fly through the air. And afterwards they would basically set out to other lands to promulgate the knowledge throughout the Andes. Same story in Central America..” (*The Prophets Conference*, Glastonbury, 2011)

Proper temples and sacred sites are calibrated to the north pole for the reason mentioned by the Galactic Historian: the dreamtime societies. The Mandala site should thus, if the scanning is correct, be ‘pointing’ architecturally to the North-South axis. Indeed there are three trees outside of the outer circle that if connected to the center of the circle form a line that is pointing at the south pole approximately as can be seen on the images. Furthermore there is a tree at a 120 degrees in relation to the polar axis. This corresponds to the 120 degree angle of the 720 degrees in a tetrahedron, confirming an i-2 outcome. The 540 degree pentagonal form (5x108) also expressed in the form of the few trees on an angle of 72 degrees from the polar axis. This is an i-3 hit since the 360 degree circle divided by five is 72. The third line, the one pointing at the upper side of the frame, is pointing approximately at the Sagittarius site. All of this confirms the hyper-conscious intention of the creation of these sites and the contemporary use of them.

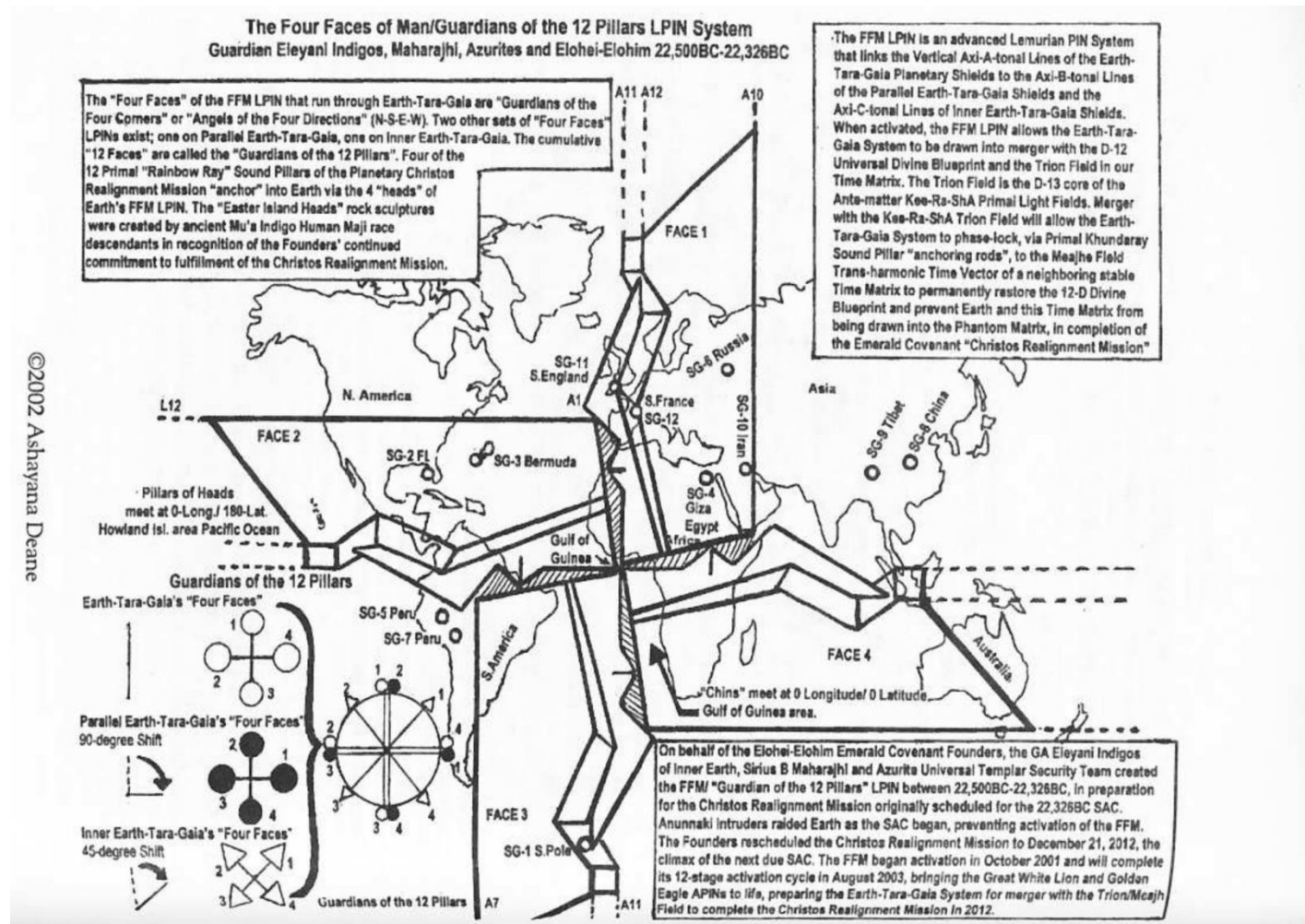
“..as a global species we go (in Dreamtime) to the North pole or the South pole Aurora Borealis. And that’s where you get your deepest Dreamtime connection because so many people have spent thousands or millions of lifetimes in the North or South pole and their form of entertainment was looking up on the night sky and seeing the Northern Lights. Which is the solar energy coming to Earth, which is an expression of solar religions that many indigenous cultures all over the world connect to. In this lifetime these past life’s bleed through and when we visualize the North or South pole Aurora Borealis we dream into the Dreaming mind of Earth, and that’s where we meet our soul families. They are physical construct astral worlds on the higher density. On the other times they are a very high density Dreamworld that interacts with the Dreamworlds of thousands of other worlds because it’s a massive *United Nations* ambassadorial complex.”

A result that is compelling is the outcome of the scanning within the paradigm of Earth's Star Gate, Axi-A-tonal, and Ley Line map of around 2002. It indicates that the Mandala site is tuned to the Axi-A-tonal number 12, it is a Que-site, and is supplemented by the Archetype entitled 'Justice' which implies a cardinal balance and esoterically speaking refers to space-time itself in the form of a globe. This means that the site anchors on the same Axi-A-tonal line as the Four Faces of man geo-grid and has the capacity to regulate the dynamics of this line. The *Justice* card (/Archetype) correlates to the 'plot dynamic' scanning outcome that reads as following: 'Pursuit; the fugitive flees punishment for a misunderstood conflict'. Further scanning indicates the involvement of a *chronogarchy*; a group that exploits temporal dynamics. The link with dreamtime, the second Harmonic Universe or fourth-fifth-sixth dimensions, is a time-link since the dream-reality exists in its own space-time hologram vector.

An Axi-A-tonal line is a:

“..thick, pulsating, (vertical), single energy line in the ground, atmosphere or running through objects, that are approximately 10-20 feet wide, extend for many miles in two opposite directions and have many smaller energy lines crossing through them diagonally and horizontally. (These form the) main grid lines from the 12 primary Star Gates, feed Templar Sites, Vortices and smaller Ley Lines.”

Deeper scanning results of the geometry and dynamics of the Mandala site indicate that it is to be regarded as a 'technology' and that the lines are relevant. The line pointing south, my zero point, seems to be the connection point of a vibration. The outcome of scanning the other lines results also in 'vibration' for the 120 degree line pointing left. The line indicated by the pentagon, the 108/72 degree line, gets as result 'oscillation'. This line, together with the inner circle of the torus, and the line pointing at the Sagittarius site, have in common the scanning result 'point, one'. The inner circle, or oculus, had a result of again the 'D-2 Electron and Sacral chakra'-card, indicating the presence electromagnetic frequency. The 108/72 degree point also carries the scanning result of Morphogenetic Chakra 10 indicating galactic dynamics. This bi-directional electromagnetic flow created by the vibration/oscillation dynamic is confirmed, hermetically of course, by the outcome of scanning the site as gestalt within the paradigm of Keylonta. The Mandala site forms an electromagnetic two-way *Vortice* of in(magnetic)/out(electric) spiraling energy that are connected to Axi-A-Tonal lines, Ley-lines or relay Networks, that exist on various plane-angles. It consists of two cones on a singular axis connected at the 'top' of each cone. "Vortices have various uses, including data harvest, storage and transmission (Deane, 2001)."

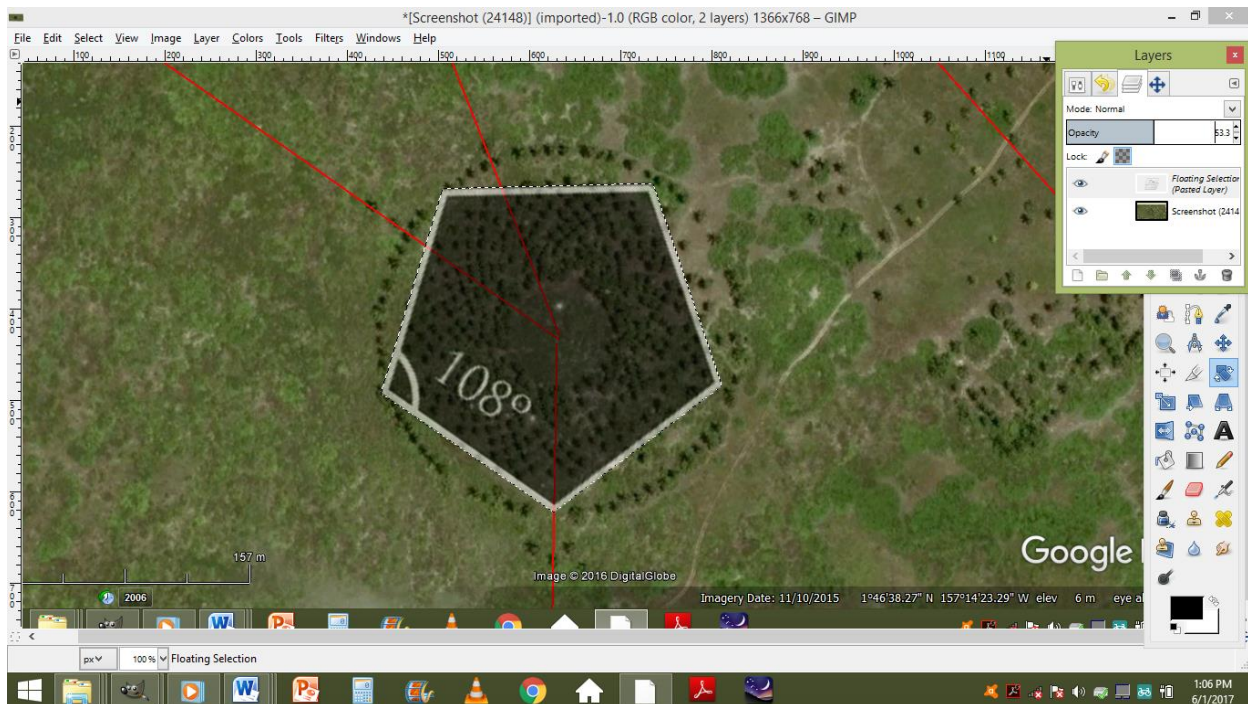


A scanning result of the oculus, the inner circle of the Mandala site, was 'event(s), action(s)'. I followed up on it and it led me to what I think is an instruction or protocol on how to use the site. Another scanning result stated that the voice must be used or a specific *Mantra* must be uttered. The first step in the protocol scanning sequence results in the I-Tjing archetype *'Thunder over Heaven'*; *The power of the Great*, suggesting a skilled practitioner. I drew fourteen cards that imply the enactment of a *Cue-Site* activation and connection to the Four Faces of Man grid. The 'Remote Viewing Target'-card was drawn after this and while investigating its *signal line* it was clear that with the site the user has the ability to amplify D-12 Maharic currents and thus overpower lower disharmonious pockets in the local geo-grid. It made me think of the Quaoar-archetype.

Freddy Silva, 2011:

"But exactly why did they embark on this colossal effort around the world? Well, this is where the ancient texts come in very handy. Because they repeatedly describe the temples as

doorways into a paradise. Into a state of bliss where the person is enlightened or is transformed.. They describe how an organization built temples and again I quote: as a representation of the spiritual places, and in doing so created an antidote against forces of darkness that steered the people who followed them into great troubles by leading them astray with many deceptions. And they died not having found the truth, and without knowing the god of truth, and thus they became enslaved forever from the foundations of the world. That's a very profound statement, except is it's also repeated thousand years earlier in the Egyptian *Book of What is in the Duat*, which refers to the temple as a kind of insurance policy. And it was built as a mirror image of natural laws so that, and I quote, whosoever shall make a copy thereof, and shall know it upon the Earth, it shall act as a magical protector for him or her, in heaven and in Earth unfailingly and regularly and eternally. These are profound statements of the purpose of sacred spaces."



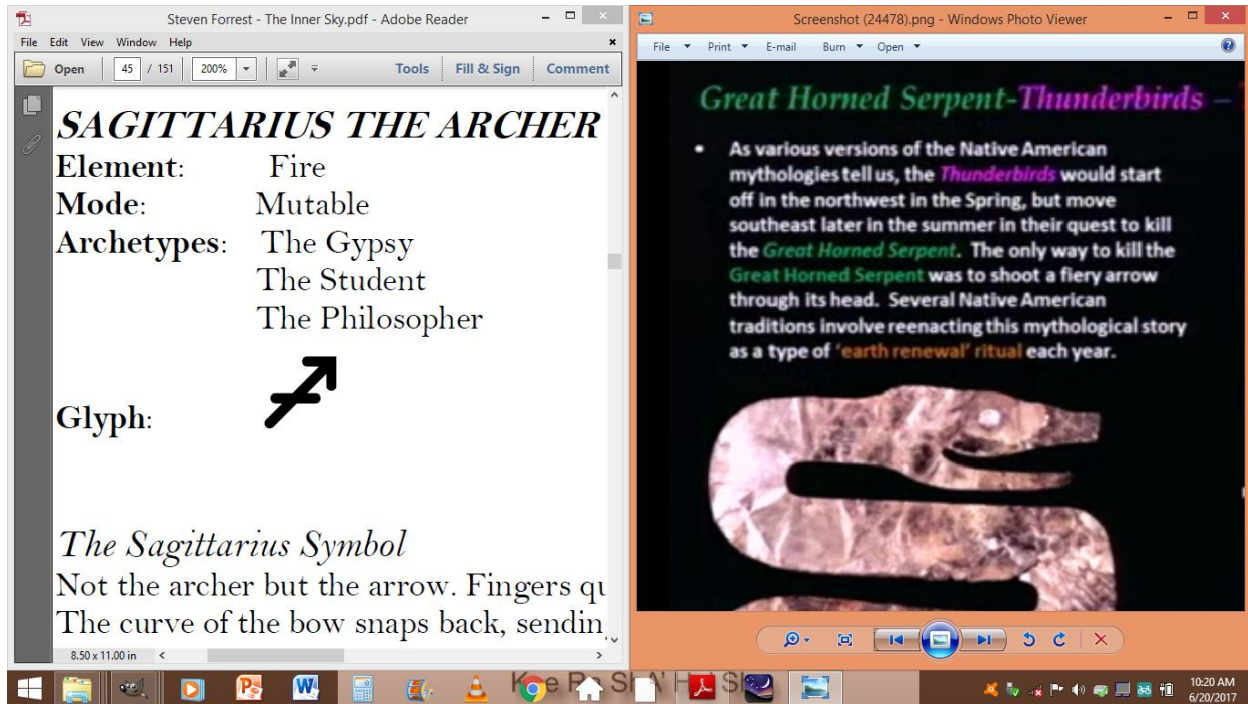
I have calibrated the lines to the south pole, since this seems to be a main indication point of the Mandala site itself marked by the three trees placed outside the circle.

He continues in another segment:

“Well funny enough the same teachings are echoed in texts from Teotihuacan to Giza to Southern India, that when you traverse the navel of the Earth you bring back the knowledge from the other world. And that a place or person subtended by this meeting between spirit and matter in turn becomes a repository of that knowledge. So what exactly happens at these places? Well apparently this interaction changes the resonance of your body just like an electrical circuit .. So, to try and wrap this up.. the global plan .. was and continues to be, believe it or not; the total empowerment of the individual through an ongoing process of self-realization. Because the ancestors always recognized that this experience we’re having collectively ultimately is a personal journey.”

The scanning results and the deduced purpose of the site link back to the Galactic Center and Sagittarius archetype. The Alchemical theme of the constellation, according to Lisa Renee’s *Laws of the Galactic Zodiac Cycle*, is ‘Incineration, Resurrection’ with the Element of Fire. The process is that when the Cosmic Aether has been connected to the body massive healing begins. It is as if the old negative form is reduced to ashes and the new form is to rise from the ashes, indeed like a Phoenix. The constellation imprints the period between December 18 and January 18, wherein the summer solstice falls (Southern hemisphere), which is in the area of the Galactic Center. Just above Orion, between Taurus and Gemini, is the location of the so called *Silver Gate*. This marks the symbolic initiation of the *Magnum Opus* of mankind, reflected by the *Golden Gate* on the other side of the ecliptic also known as the Galactic Center. The golden gate locates between the point of the Arrow of the Zen Archer Sagittarius and the right foot of Ophiuchus the Serpent Holder. The theme of the Galactic Center is graduation on soul matters and living in the truth of who you really are according to Nick Fiorenza. Orion and Ophiuchus are mirror images of each other, together symbolizing the soul’s journey through the ages, humankind’s heroic journey, the unification of polarities. Ophiuchus specifically lies next to Sagittarius and holds, symbolically, the knowledge and wisdom of the ages. The Archer points at the Center of our collective hologram as Galactic Citizens in which each one of us has a personal journey. The Arrow on Kiritimati points at a portal to a Dreamscape where the ambitious person can enter this realm through cardinal interaction with the Mandala and its Light Body. The Light Body in esoteric Western circles was signified with the Fire Element, which is the Dream-body. With the Alchemical theme of the constellation it corresponds to the theme of initiating ascension through incinerating negative energies through Cosmic Fire (Aether/Rays) and conscious, intellectual interaction with the ambassador of the sites,

which in turn were ambassadors of the galaxy as scanning results fed back to me. The suggestion of the language of the sites, if I read it correctly, is that there is a physical-dreamtime interaction on a galactic level going on.



Native North American mythologies speak of the *Thunderbirds*, an allegory that forms a model for understanding the phenomenon of lightning, the four cardinal directions (north, west, south, east), and they also function as the messengers to the spirit world. I mention this because the Thunderbird correlates properly with the Sagittarius glyph. The Ojebways believed that when a thunderbolt strikes a tree the Thunderbird 'had shot its fiery arrows at a serpent and caught it up in the twinkling of an eye'. Thus the Archetypal bird symbolically behaves like a Sagittarius with a clear target. The only way to kill the *Great Horned Serpent* was to shoot a fiery arrow through its head. The birds feed upon serpents which they take from under the Earth. There are several traditions that reenact this myth as a ceremonial 'earth renewal' ritual. In my understanding this is about the geo-grid energies and the drawing of subterranean telluric-doradic energies onto the surface using the interface of the Human body. The correlation is obviously the fiery arrow and the dynamic of drawing wave-like energies (the serpent) out of the earth to feed a spirit-messenger. The connection to the four corners/cardinal directions implies that the Thunderbirds are involved in the dynamic of the Earth's Templar, since this follows the 'four corners' architecture.



If we follow the logic of the visual cues and the archetypal patterns the deduction is that the serpent is extracted out of the area between Scorpio, Sagittarius and Ophiuchus. The constellation Scutum implies the four corners, Aquila means Eagle and the Swan flies next to it on the Galactic equator, and the Horned Serpent correlates to Scorpio. In front of the Eagle's beak we find Sagitta the arrow in mid-air.





Written by Jorge Caetano Fernandes

jorge.C.Fernandes@Gmail.com

JorgeInAction.blogspot.com

JCFernandes.com

All rights reserved, the writer gives permission to print and/or disseminate this article at will only if it is done so in its entirety without modification and the proper credits.